



U.S. Economic Development Administration

2008
NEW ORLEANS

**REGIONAL ECONOMIC
DEVELOPMENT CONFERENCE**
"Sustaining American Prosperity: The 21st Century Challenge"

The American Worker: Trends and Analyses

The Impact of Hispanic-American Workers

A presentation by Max Hernandez

Project Director

**Population, Immigration, Labor and American
Competitiveness Study**



<http://thehispanicinstitute.net/>

This presentation was developed and presented by Max Hernandez at the U. S. Economic Development Administration's Regional Economic Development Conference held in New Orleans, April 17-18, 2008.

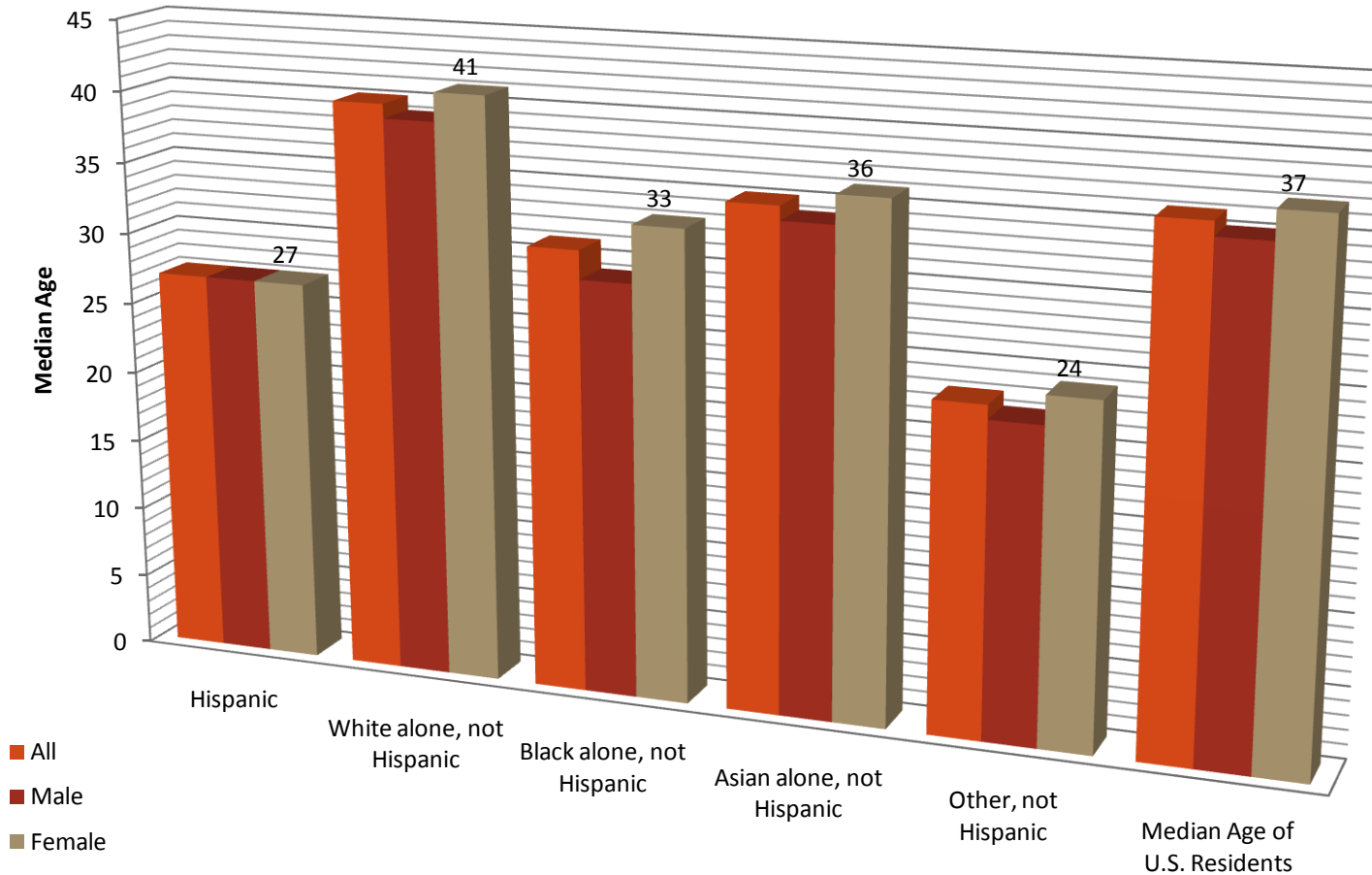
Bill Gates, William H. Gates

Chairman, Microsoft Corporation

Congressional Testimony March 12, 2008

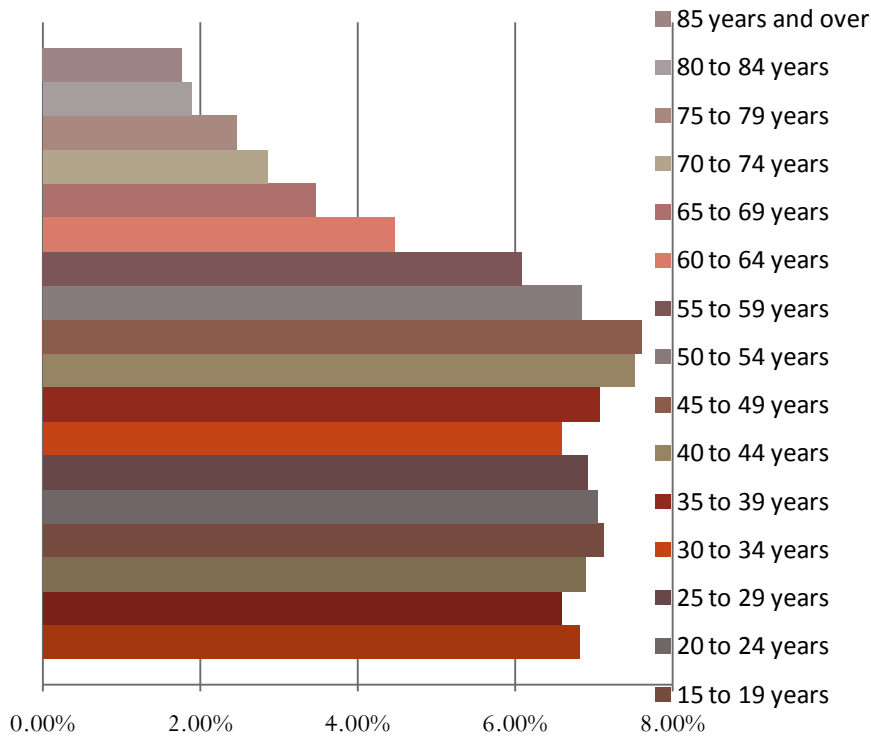
The United States will find it far more difficult to maintain its competitive edge over the next 50 years if it excludes those who are able and willing to help us compete... if we are to align our immigration policy with global realities and ensure our place as the world's leading innovator... the already years-long wait for green cards [...] only encourage[s] talented foreign nationals who are already contributing to innovation in U.S. companies to leave and take their talents elsewhere. Innovation is the engine of job growth; if we discourage innovation here at home, economic growth will decline, resulting in fewer jobs for American workers...

Median Age in Years by Sex, Race and Ethnicity

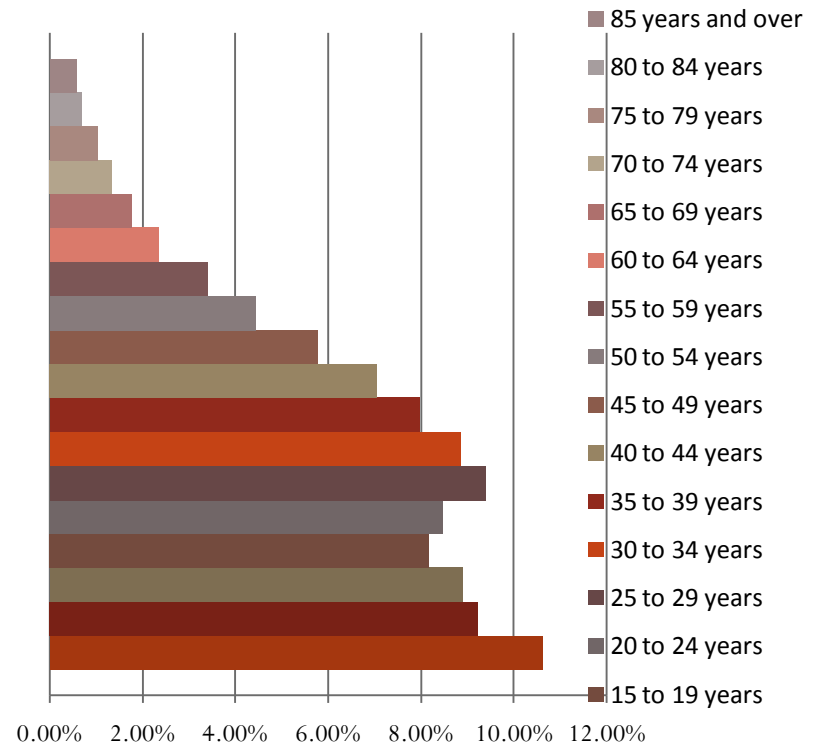


Age Distribution Percentages for General & Hispanic/Latino U.S. Populations: 2006

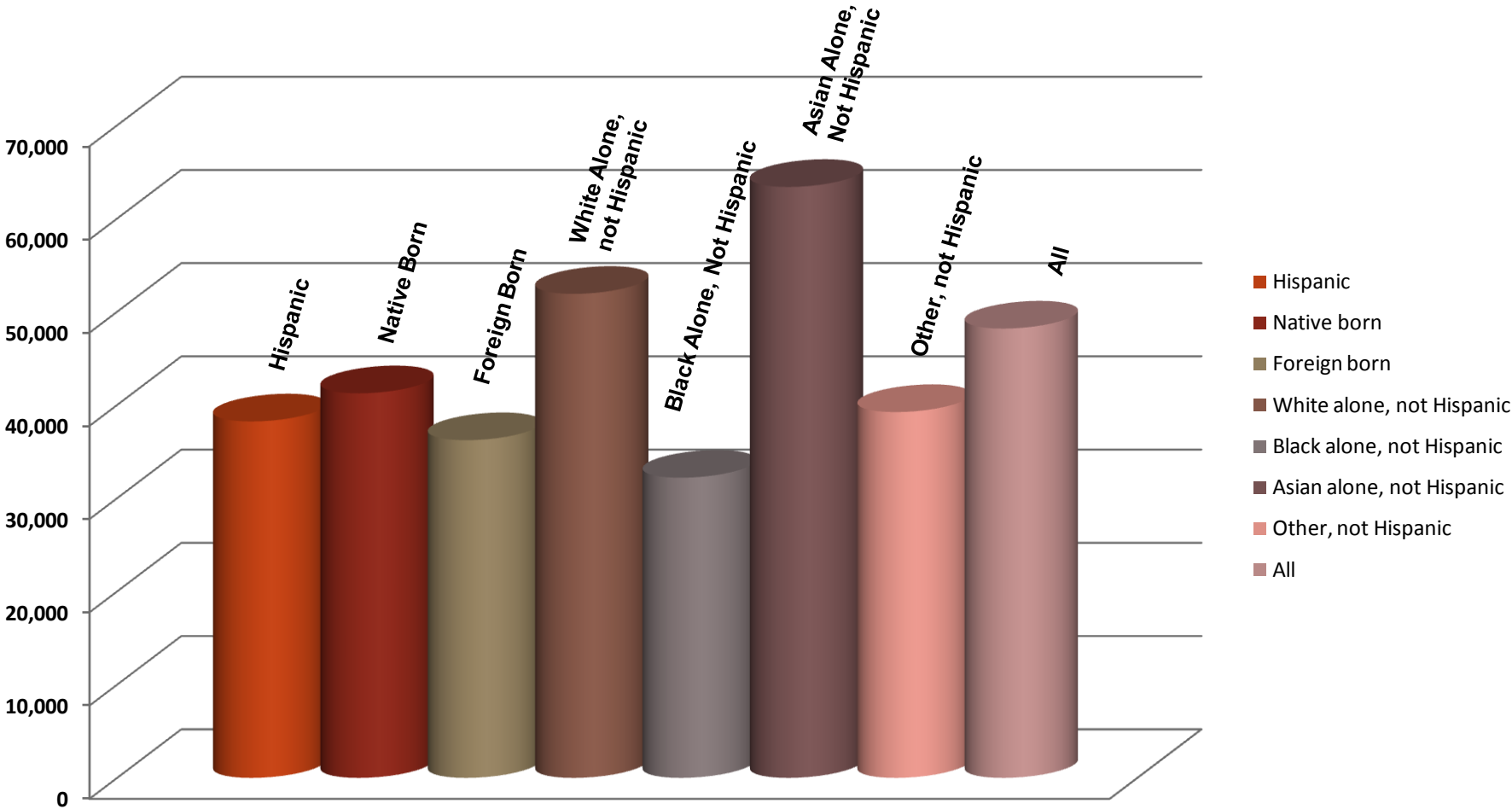
General Population



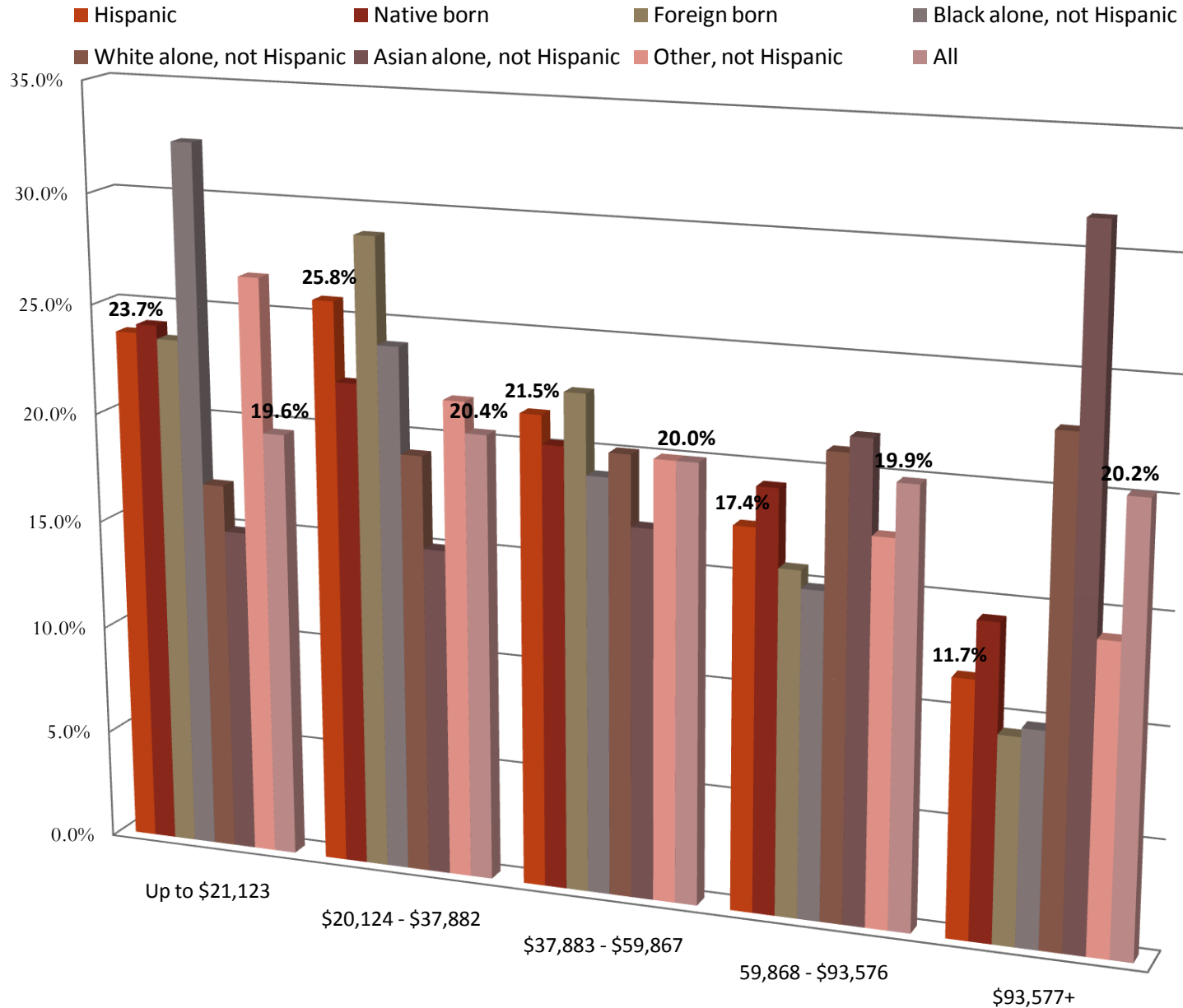
Hispanic/Latino Population



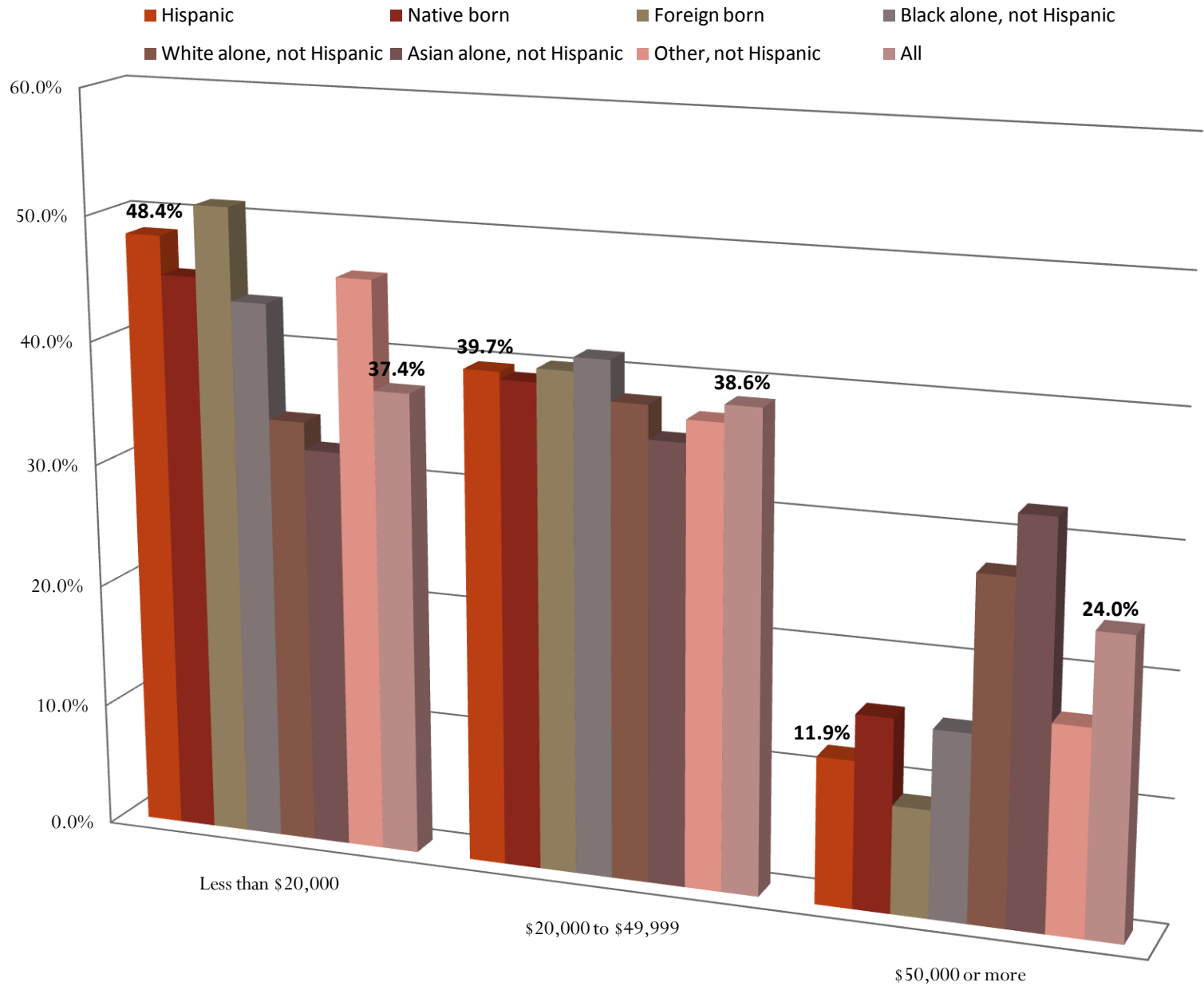
Median U.S. Household Income by Race and Ethnicity: 2006



Households by Income, Race, and Ethnicity

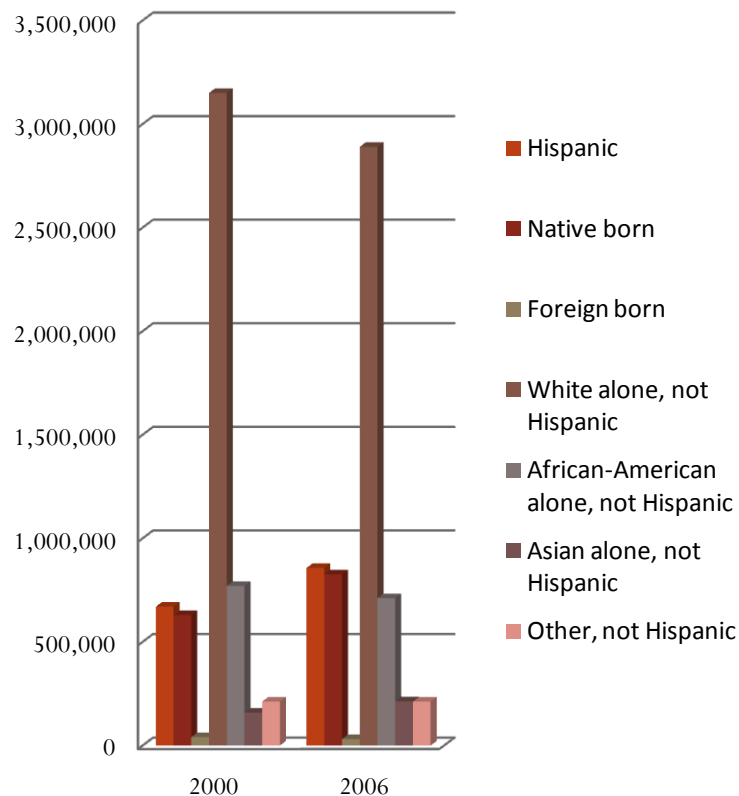


Individuals by Income, Race, and Ethnicity: 2006

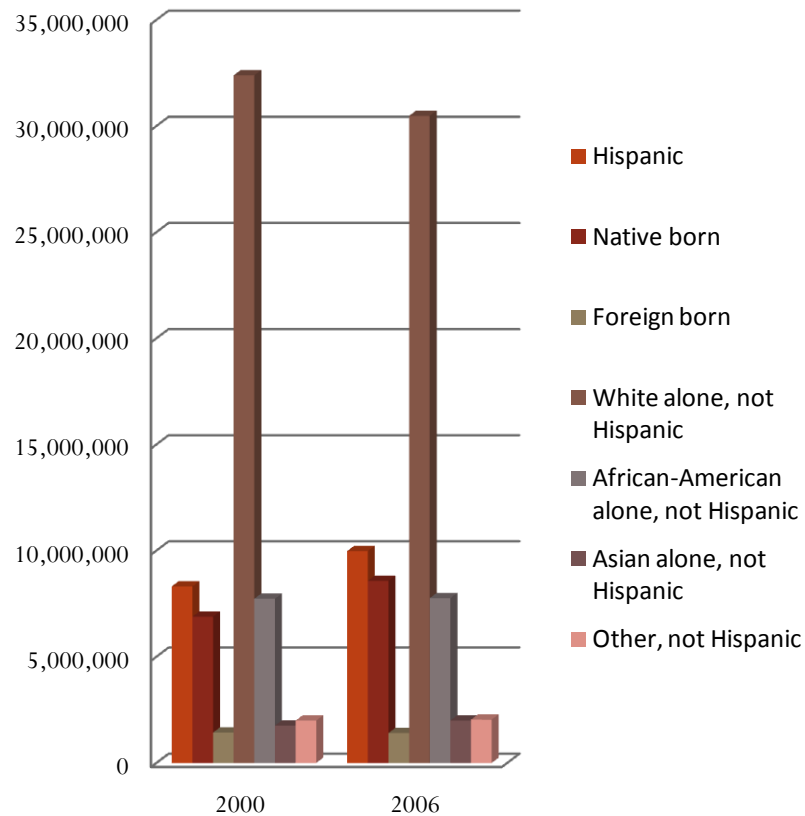


School Enrollment by Race & Ethnicity: 2000 to 2006

Nursery School

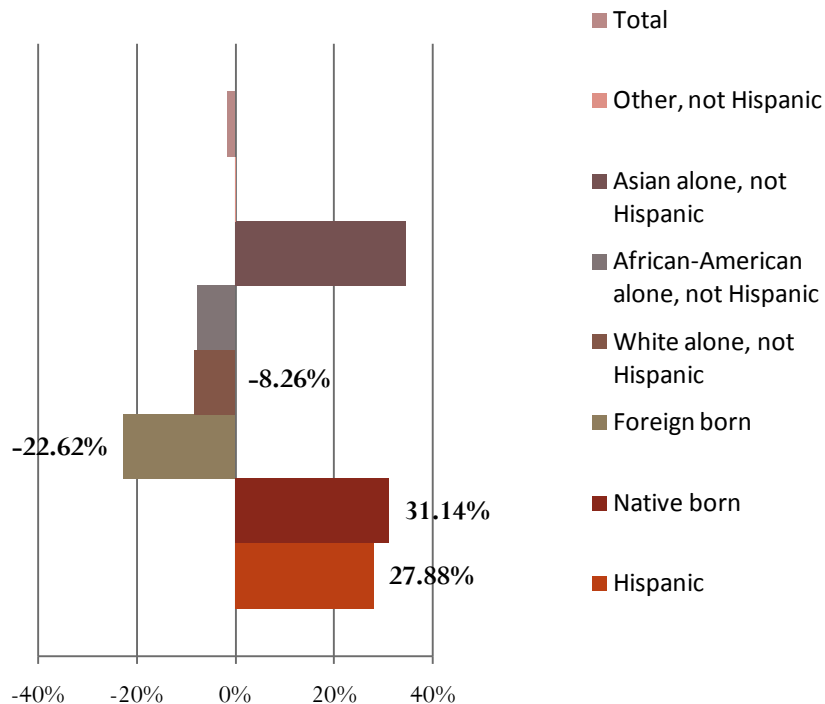


Kindergarten – 12th Grade

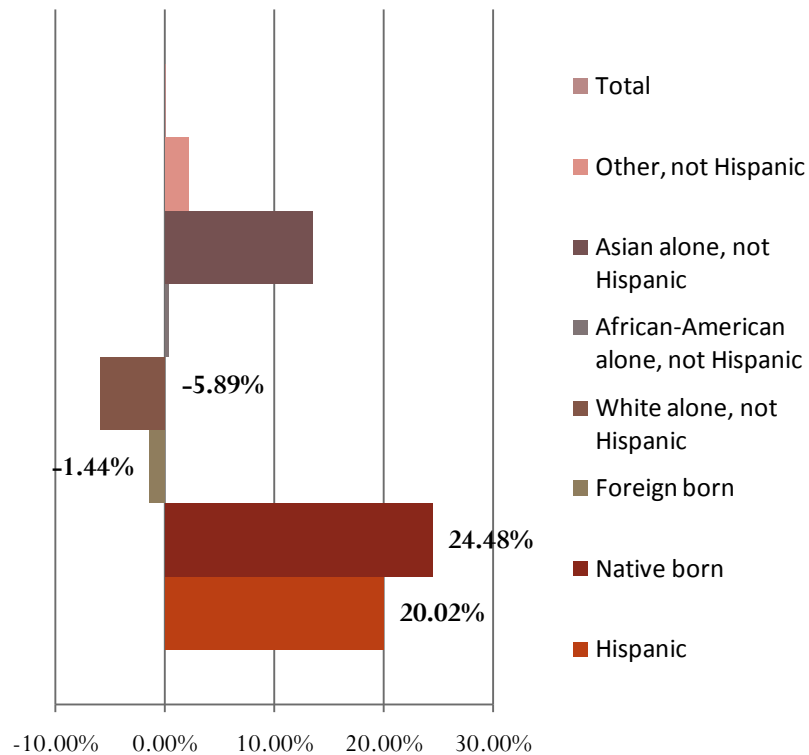


Percentage Change in School Enrollment by Race and Ethnicity: 2000 to 2006

Nursery School

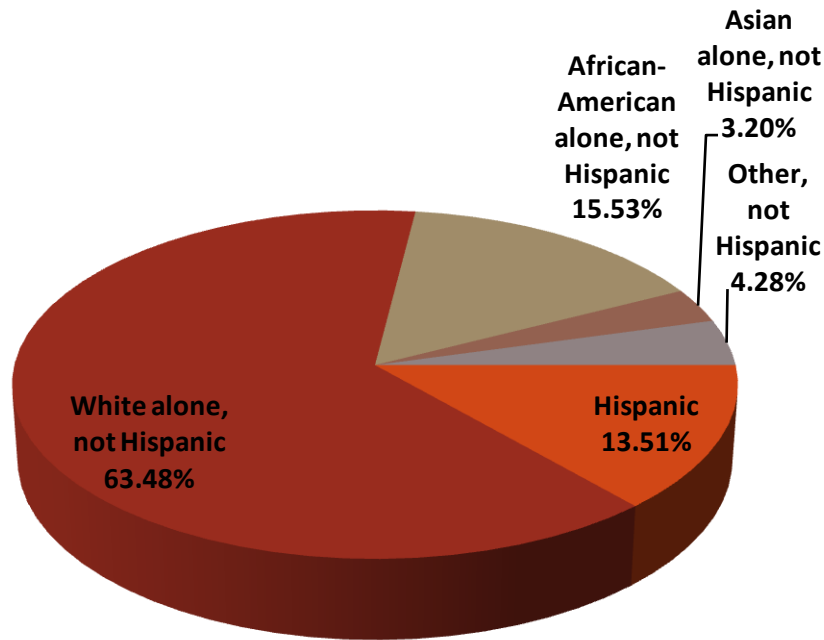


Kindergarten – 12th Grade

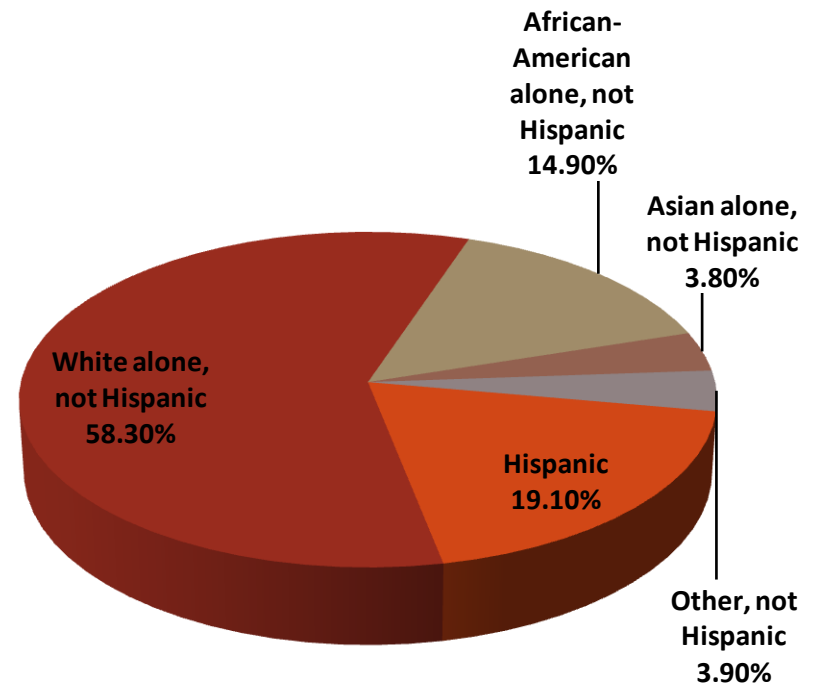


Change in Percentage of Nursery School Enrollment by Race/ Ethnicity: 2000 to 2006

2000

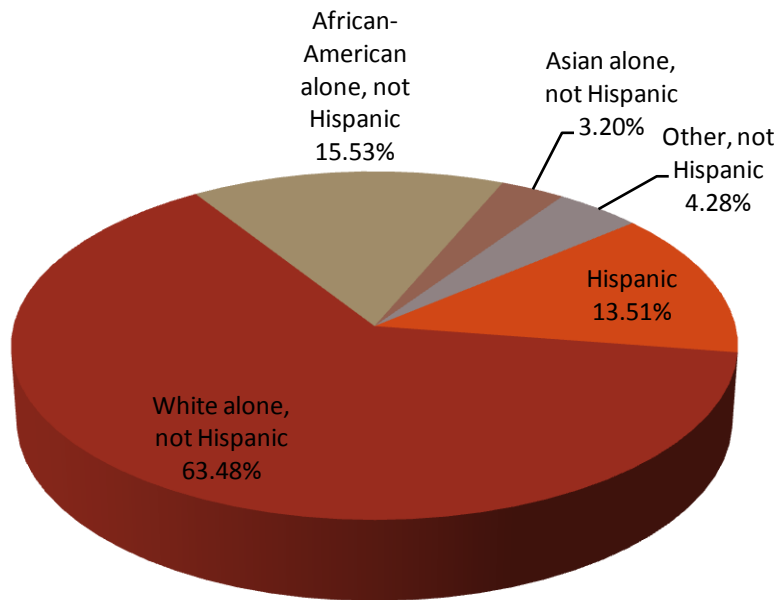


2006

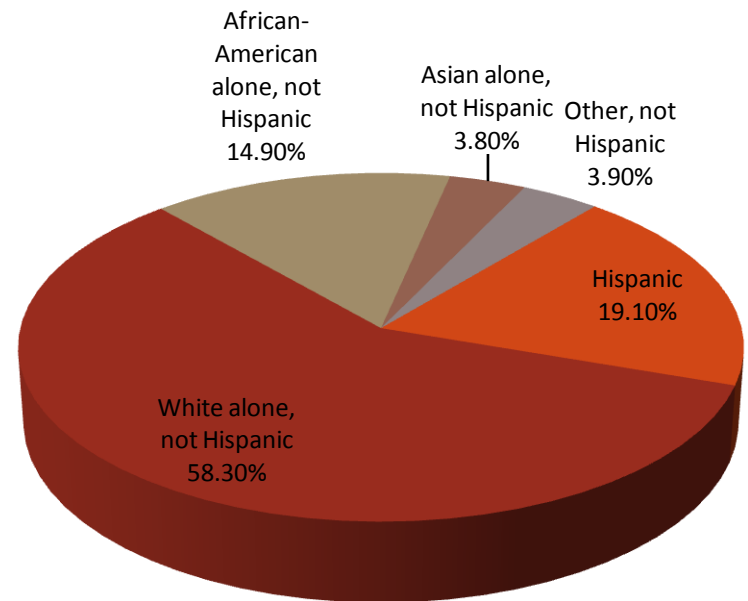


Percentage Change of Kindergarten to 12th Grade School Enrollment: 2000 to 2006

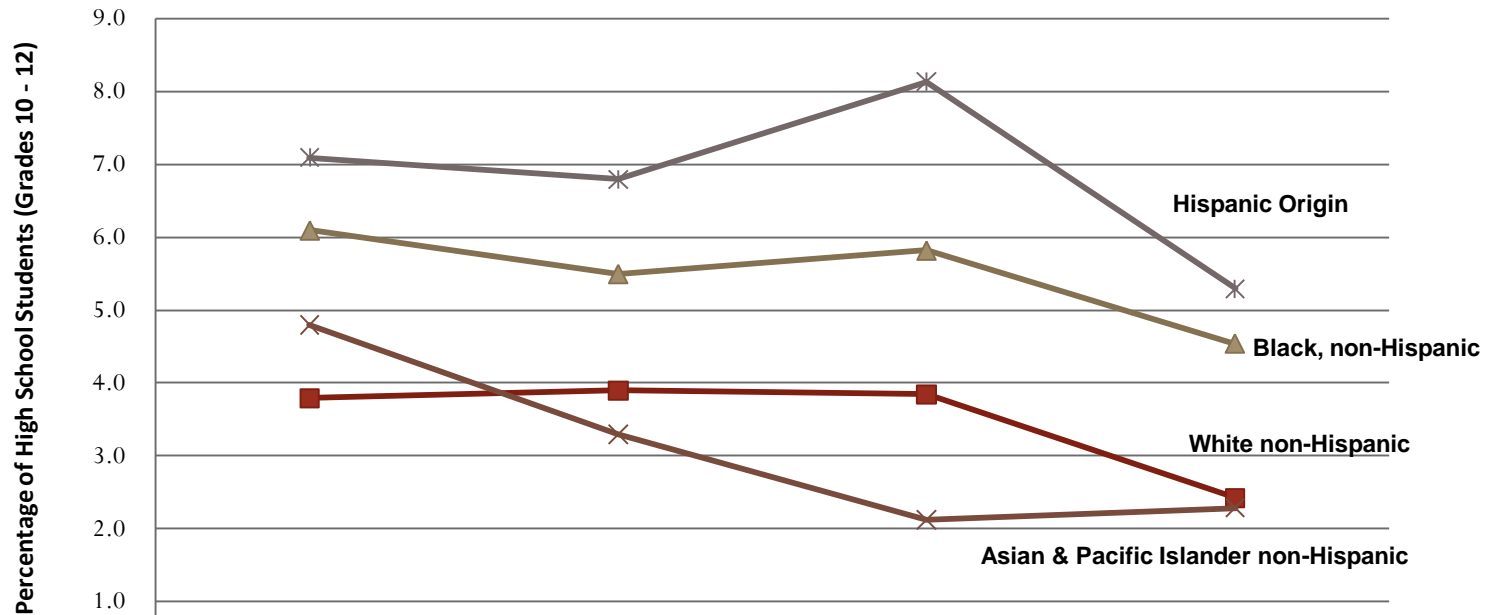
2000



2006

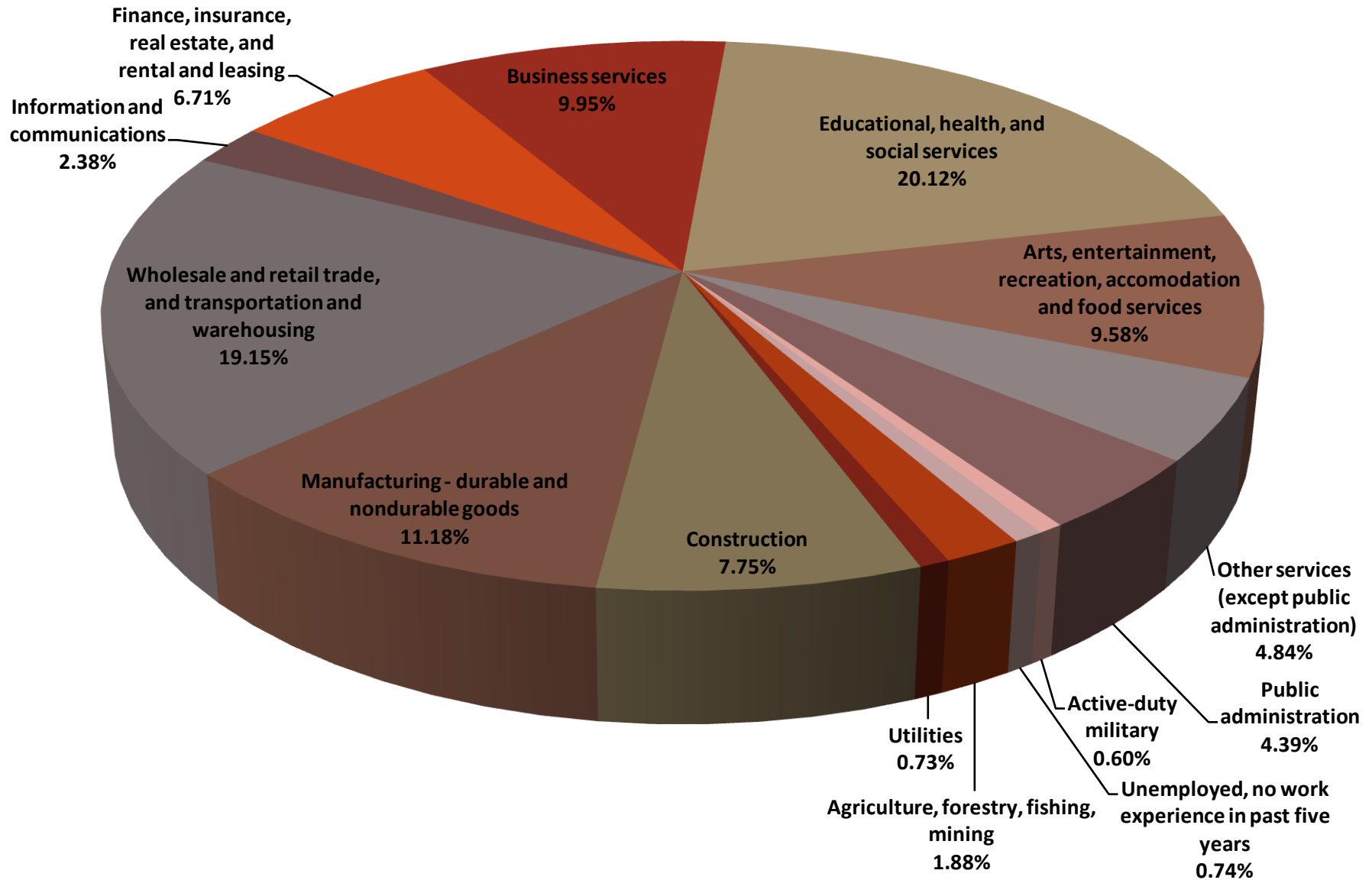


Dropout Rates 1999 - 2002

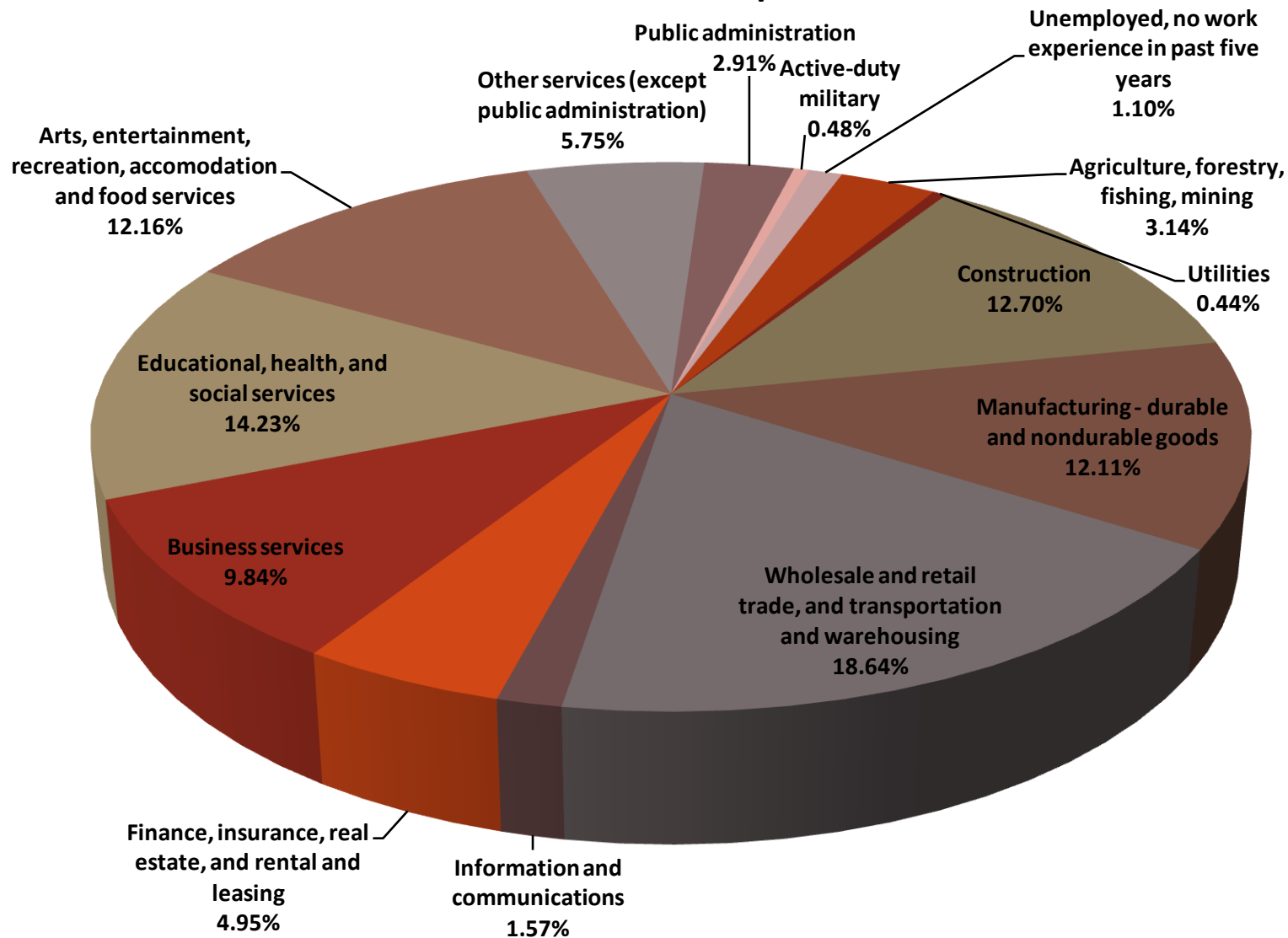


	1999	2000	2001	2002
■ White non-Hispanic	3.8	3.9	3.8	2.4
▲ Black non-Hispanic	6.1	5.5	5.8	4.5
× Asian & Pacific Islander non-Hispanic	4.8	3.3	2.1	2.3
* Hispanic Origin	7.1	6.8	8.1	5.3

Employment Percentages for Non-Hispanic/Latino American Workers by Broad Cluster Group



Employment Percentages for Hispanic/Latino Workers by Broad Cluster Groups



It is hardly possible to overrate the value, for the improvement of human beings, of things which bring them into contact with persons dissimilar to themselves, and with modes of thought and action unlike those with which they are familiar...it is indispensable to be perpetually comparing [one's] own notions and customs with the experience and example of persons in different circumstances... there is no nation which does not need to borrow from others.

John Stuart Mill (d. 1873)